



RISING STAR OF THE VALVE INDUSTRY



RISING STAR
OF THE VALVE
INDUSTRY

Starvalve provides industrial valves and actuators for high chemical corrosive / aggressive fluids and other fluids.

Our main products that pneumatic actuated, electrical actuated and manual controlled; butterfly valves, ball valves, diaphragm valves, knife gate valves, pinch valves, thermoplastic and PTFE/ PFA lined pipe & fittings use as successfully in chemical and petro-chemical plants, Chlorine-Alkali Plants, Iron&Steel Industries, Copper Electrolysis Plants, Aluminum Anodising Plants, Fertilizer Plants, Water and Wastewater Treatment Plants, Coating Plants, Mining Industries and Ship Building Industries.





STAR
VALVE

www.starvalve.com.tr

STAR P SERIES PNEUMATIC ACTUATOR
Model : STAR P 075 DA
Torque : 80 Nm
Acting : Double Acting
ISO5211 : F05 / F07 - 14mm
Max Press. : 8 Bar

II 2 GD T95°C

ATEX - Director MCB/C



THERMOPLASTIC PRODUCTS

SV210 SERIES

DOUBLE UNION, INDUSTRIAL TYPE BALL VALVES

TECHNICAL ADVANTAGES

- 1/2" ~ 4" sizes,
- Drinking water standarts,
- CaCO3 calcite free 100% pure virgin material,
- UV resistant powder added,
- Specially designed for heavy industrial applications,
- Double o-ring shaft design,
- Friction and wearing resistance
PTFE (Teflon) ball seal,
- Reducing the wearing of PTFE seat with back-up o-ring for frequently opening/closing applications,
- Safe mounting with a special locking ball system,
- Water applications EPDM O-ring, Asidic applications VITON O-ring alternatives,
- Made of PPS material with braket&shaft ISO5211 directly according to mounting actuator top flanged,
- 100% tightness testing before shipment,
- DIN, ANSI, JIS norms



MATERIAL OPTIONS

U-PVC	MAXIMUM 55°C
C-PVC	MAXIMUM 95°C
PP-H	MAXIMUM 95°C
PVDF	MAXIMUM 140°C
TRANSPARENT-PVC	MAXIMUM 55°C

CONNECTION TYPE

- Socket Solvent Cement (U-PVC, C-PVC)
- Threaded End (U-PVC, C-PVC, PP-H, PVDF)
- Socket Welded (PP-H - PVDF)
- Butt Welded (PP-H - PVDF)

TECHNICAL DRAWING



TECHNICAL ADVANTAGES

- ½" ~ 4" (DN15 ~ DN100) sizes,
 - Drinking water standards,
- CaCO₃ calcite free 100% pure virgin material,
 - UV resistant powder added,
- Specially designed for heavy industrial applications,
 - Double o-ring shaft design,
 - Friction and wearing resistance PTFE (Teflon) ball seal,
- Reducing the wearing of PTFE seat with back-up o-ring for frequently opening/closing applications,
- Safe mounting with a special locking ball system,
- Water applications EPDM O-ring, Asidic applications VITON O-ring alternatives,
- Made of PPS material with bracket&shaft ISO5211 directly according to mounting actuator top flanged,
 - 100% tightness testing before shipment,
 - DIN, ANSI, JIS norms

SV210 SERIES

FLANGED, INDUSTRIAL TYPE BALL VALVES



MATERIAL OPTIONS

U-PVC	MAXIMUM 55°C
C-PVC	MAXIMUM 95°C
PP-H	MAXIMUM 95°C
PVDF	MAXIMUM 140°C

CONNECTION TYPE

Flanged Joint

APPLICATION AREA

- Chemical and Petrochemical Industry,
- Water and Process Technologies,
- In the Shipbuilding and Yacht Industry,
- Electrolysis Premises,
- Mining Industry,
- Food Industry
- Cooling Systems,
- Coating Plant,

SV210 SERIES

PNEUMATIC ACTUATED INDUSTRIAL TYPE BALL VALVES

TECHNICAL ADVANTAGES

- ½" ~ 4" sizes,
- Drinking water standards,
- CaCO3 calcite free 100% pure virgin material,
- UV resistant powder added,
- Specially designed for heavy industrial applications,
- Double o-ring shaft design,
- Friction and wearing resistance PTFE (Teflon) ball seal,
- Reducing the wearing of PTFE seat with back-up o-ring for frequently opening/closing applications,
- Safe mounting with a special locking ball system,
- Water applications EPDM O-ring, Asidic applications VITON O-ring alternatives,
- Made of PPS material with bracket&shaft ISO5211 directly according to mounting actuator top flanged,
- 100% tightness testing before shipment,
- DIN, ANSI, JIS norms



MATERIAL OPTIONS

U-PVC	MAXIMUM 55°C
C-PVC	MAXIMUM 95°C
PP-H	MAXIMUM 95°C
PVDF	MAXIMUM 140°C
TRANSPARENT-PVC	MAXIMUM 55°C

CONNECTION TYPE

Socket Solvent Cement (U-PVC, C-PVC)
 Threaded End (U-PVC, C-PVC, PP-H, PVDF)
 Socket Welded (PP-H - PVDF)
 Flanged (U-PVC, C-PVC, PP-H, PVDF)
 Butt Welded (PP-H - PVDF)

ACTUATOR FEATURES

- Aluminum extruded body,
- Double acting or single acting (spring return) pneumatic actuator options,
- Optional on / off switch box with mechanical or proximity limit,
- Optional with NAMUR valve type air direction,
- 3-15ps or proportional control with a choice of 4-20 mA

TECHNICAL ADVANTAGES

- ½" ~ 4" sizes,
 - Drinking water standards,
- CaCO₃ calcite free 100% pure virgin material,
 - UV resistant powder added,
- Specially designed for heavy industrial applications,
 - Double o-ring shaft design,
 - Friction and wearing resistance PTFE (Teflon) ball seal,
- Reducing the wearing of PTFE seat with back-up o-ring for frequently opening/closing applications,
- Safe mounting with a special locking ball system,
- Water applications EPDM O-ring, Asidic applications VITON O-ring alternatives,
- Made of PPS material with bracket&shaft ISO5211 directly according to mounting actuator top flanged,
 - 100% tightness testing before shipment,
 - DIN, ANSI, JIS norms

SV210 SERIES

ELECTRICAL ACTUATED INDUSTRIAL TYPE BALL VALVES



MATERIAL OPTIONS

U-PVC	MAXIMUM 55°C
C-PVC	MAXIMUM 95°C
PP-H	MAXIMUM 95°C
PVDF	MAXIMUM 140°C
TRANSPARENT-PVC	MAXIMUM 55°C

CONNECTION TYPE

Socket Solvent Cement (U-PVC, C-PVC)
 Threaded End (U-PVC, C-PVC, PP-H, PVDF)
 Socket Welded (PP-H - PVDF)
 Flanged (U-PVC, C-PVC, PP-H, PVDF)
 Butt Welded (PP-H - PVDF)

ACTUATOR FEATURES

- 24V DC, 24V AC, 220V AC, 110V AC power supply options,
- Proportional control with a choice of 4-20 mA,
- The possibility of manual intervention when the power cut,

SV230 SERIES

LEVER HANDLE, THREE WAYS BALL VALVES

TECHNICAL ADVANTAGES

- 3/8" ~ 2" (DN10 ~ DN50) sizes,
- Both L-type and T-type working option,
- Drinking water standards,
- CaCO₃ calcite free 100% pure virgin material,
- UV resistant powder added,
- Specially designed for heavy industrial applications,
- Water applications EPDM O-ring, Asidic applications VITON O-ring alternatives,
- Made of PPS material with bracket&shaft ISO5211 directly according to mounting actuator top flanged,
- 100% tightness testing before shipment,
- Working pressure Max:10 Bar,
- DIN, ANSI, JIS Norms,



MATERIAL OPTIONS

U-PVC	MAXIMUM 55°C
C-PVC	MAXIMUM 95°C
PP-H	MAXIMUM 95°C
PVDF	MAXIMUM 140°C

CONNECTION TYPE

Socket Solvent Cement (U-PVC, C-PVC)
Threaded End (U-PVC, C-PVC, PP-H, PVDF)
Socket Welded (PP-H - PVDF)
Butt Welded (PP-H, PVDF)
Flanged

SV230 SERIES

PNEUMATIC ACTUATED, THREE WAYS BALL VALVES

TECHNICAL ADVANTAGES

- ¾" ~ 2" (DN10 ~ DN50) sizes,
- Both L-type and T-type working option,
 - Drinking water standards,
- CaCO₃ calcite free 100% pure virgin material,
 - UV resistant powder added,
- Specially designed for heavy industrial applications,
- Water applications EPDM O-ring, Asidic applications VITON O-ring alternatives,
- Made of PPS material with bracket&shaft ISO5211 directly according to mounting actuator top flanged,
- 100% tightness testing before shipment,
- Working pressure Max:10 Bar,
 - DIN, ANSI, JIS Norms,



MATERIAL OPTIONS

U-PVC	MAXIMUM 55°C
C-PVC	MAXIMUM 95°C
PP-H	MAXIMUM 95°C
PVDF	MAXIMUM 140°C

CONNECTION TYPE

Socket Solvent Cement (U-PVC, C-PVC)
 Threaded End (U-PVC, C-PVC, PP-H, PVDF)
 Socket Welded (PP-H - PVDF)
 Butt Welded (PP-H, PVDF)
 Flanged

ACTUATOR FEATURES

- Aluminum extruded body,
- Double acting or single acting (spring return) pneumatic actuator options,
- Optional on / off switch box with mechanical or proximity limit,
- Optional with NAMUR valve type air direction,
- 3-15ps or proportional control with a choice of 4-20 mA,

SV230 SERIES

ELECTRICAL ACTUATED, THREE WAYS BALL VALVES

TECHNICAL ADVANTAGES

- 3/8" ~ 2" (DN10 ~ DN50) sizes,
- Both L-type and T-type working option,
- Drinking water standards,
- CaCO₃ calcite free 100% pure virgin material,
- UV resistant powder added,
- Specially designed for heavy industrial applications,
- Water applications EPDM O-ring, Asidic applications VITON O-ring alternatives,
- Made of PPS material with bracket&shaft ISO5211 directly according to mounting actuator top flanged,
- 100% tightness testing before shipment,
- Working pressure Max:10 Bar,
- DIN, ANSI, JIS Norms,



MATERIAL OPTIONS

U-PVC	MAXIMUM 55°C
C-PVC	MAXIMUM 95°C
PP-H	MAXIMUM 95°C
PVDF	MAXIMUM 140°C

CONNECTION TYPE

Socket Solvent Cement (U-PVC, C-PVC)
Threaded End (U-PVC, C-PVC, PP-H, PVDF)
Socket Welded (PP-H - PVDF)
Butt Welded (PP-H, PVDF)
Flanged

ACTUATOR FEATURES

- 24V DC, 24V AC, 220V AC, 110V AC power supply options,
- Proportional control with a choice of 4-20 mA,
- The possibility of manual intervention when the power cut,

SV110 SERIES

TECHNICAL ADVANTAGES

- ½" ~ 4" sizes,
- Drinking water standards,
- CaCO₃ calcite free 100% pure virgin material,
- UV resistant powder added,
- Double o-ring shaft design,
- Safe mounting with a special locking ball system,
- 100% tightness testing before shipment,
- DIN, ANSI, JIS norms

DOUBLE UNION, ECONOMICAL TYPE BALL VALVES



MATERIAL OPTIONS

U-PVC MAXIMUM 55°C

CONNECTION TYPE

Socket Solvent Cement
Flanged

FE SERIES

HAND LEVER ECONOMICAL TYPE BUTTERFLY VALVES

TECHNICAL ADVANTAGES

- 1½" ~ 8" (DN 40 ~ DN200) sizes,
- Bi-directional centric butterfly valve,
- DN40 ~ DN50 : PN16, DN65 ~ DN200 : PN10 (with water at 20°C) nominal pressures,
- EN ISO 1452, EN ISO 15493, DIN 2501, ISO 7005-1, EN 1092-1, ASTM B16.5 Cl.150 flanging standards,
- EN ISO 16136, EN ISO 1452, EN ISO 15493 construction criteria,
- ISO 9393 test methods and requirements,
- ISO 5211 actuator couplings,
- PVC-U disk and body,
- Zinc plated carbon steel (C45). On request Stainless Steel AISI 316 stem.
- Liner; EPDM, FPM. On request NBR seal material,
- Hand Lever Operated, Gearbox, Pneumatic Actuated, Electric Actuated Control Options,
- The wafer valve can be transformed into a one-way Lug body valve thanks to the set of zinc plated steel inserts available as an optional extra.



MATERIAL OPTIONS

U-PVC

MAXIMUM 55°C

CONNECTION TYPE

Wafer type butterfly valve
Wafer type butterfly valve with flanged set

APPLICATION AREA

- Water and Process Technologies,
- Mining Industry,
- Food Industry
- Cooling systems

TECHNICAL ADVANTAGES

- 1½" ~ 8" (DN 40 ~ DN200) sizes,
- Bi-directional centric butterfly valve,
- DN40 ~ DN50 : PN16, DN65 ~ DN200 : PN10 (with water at 20°C) nominal pressures,
- EN ISO 1452, EN ISO 15493, DIN 2501, ISO 7005-1, EN 1092-1, ASTM B16.5 Cl.150 flanging standards,
 - EN ISO 16136, EN ISO 1452, EN ISO 15493 construction criteria,
- ISO 9393 test methods and requirements,
 - ISO 5211 actuator couplings,
 - PVC-U disk and body,
 - Zinc plated carbon steel (C45). On request Stainless Steel AISI 316 stem.
- Liner; EPDM, FPM. On request NBR seal material,
- Hand Lever Operated, Gearbox, Pneumatic Actuated, Electric Actuated Control Options,
- The wafer valve can be transformed into a one-way Lug body valve thanks to the set of zinc plated steel inserts available as an optional extra.

FE SERIES

PNEUMATIC ACTUATED ECONOMICAL TYPE BUTTERFLY VALVES



MATERIAL OPTIONS

U-PVC MAXIMUM 55°C

CONNECTION TYPE

- Wafer Type Bare Butterfly Valve
- Wafer Type Butterfly Valve with Flanged Set

APPLICATION AREA

- Water and Process Technologies,
- Mining Industry,
- Food Industry
- Cooling systems

FE SERIES

ELECTRICAL ACTUATED ECONOMICAL TYPE BUTTERFLY VALVES

TECHNICAL ADVANTAGES

- 1½" ~ 8" (DN 40 ~ DN200) sizes,
- Bi-directional centric butterfly valve,
- DN40 ~ DN50 : PN16, DN65 ~ DN200 : PN10 (with water at 20°C) nominal pressures,
- EN ISO 1452, EN ISO 15493, DIN 2501, ISO 7005-1, EN 1092-1, ASTM B16.5 Cl.150 flanging standards,
- EN ISO 16136, EN ISO 1452, EN ISO 15493 construction criteria,
- ISO 9393 test methods and requirements,
- ISO 5211 actuator couplings,
- PVC-U disk and body,
- Zinc plated carbon steel (C45). On request Stainless Steel AISI 316 stem.
- Liner; EPDM, FPM. On request NBR seal material,
- Hand Lever Operated, Gearbox, Pneumatic Actuated, Electric Actuated Control Options,
- The wafer valve can be transformed into a one-way Lug body valve thanks to the set of zinc plated steel inserts available as an optional extra.



MATERIAL OPTIONS

U-PVC MAXIMUM 55°C

CONNECTION TYPE

- Wafer Type Butterfly Valve
- Wafer Type Butterfly Valve with Flanged Set

ACTUATOR FEATURES

- 24V DC, 220V AC, 110V AC power supply options,
- Proportional control with a choice of 4-20 mA,
- The possibility of manual intervention when the power cut.

FK SERIES

TECHNICAL ADVANTAGES

- 1½" ~ 16" (DN 40 ~ DN400) sizes,
- Bi-directional centric butterfly valve,
- EN ISO 1452, EN ISO 15493, DIN 2501, ISO 7005-1, EN 1092-1, ASTM B16.5 Cl.150 flanging standards,
 - EN ISO 16136, EN ISO 1452, EN ISO 15493 construction criteria,
 - ISO 9393 test methods and requirements,
 - ISO 5211 actuator couplings,
- PP-GR (Polypropylene - Glass Reinforced) body,
 - PVC-U/PVC-C/PP-H/PVDF disk,
 - Stainless Steel AISI 316 stem.
- Liner; EPDM, FPM. On request NBR seal material,
- Hand Lever Operated (DN40 ~ DN200); Gearbox, Pneumatic Actuated, Electric Actuated Control Options,

HAND LEVER INDUSTRIAL TYPE BUTTERFLY VALVES



MATERIAL OPTIONS

U-PVC	MAXIMUM 55°C
C-PVC	MAXIMUM 95°C
PP-H	MAXIMUM 95°C
PVDF	MAXIMUM 140°C

CONNECTION TYPE

Wafer type butterfly valve
Wafer type butterfly valve with flanged set
Lug type butterfly valve
Lug type butterfly valve with flanged set

TECHNICAL DRAWING



FK SERIES

PNEUMATIC ACTUATED INDUSTRIAL TYPE BUTTERFLY VALVES

TECHNICAL ADVANTAGES

- 1½" – 16" (DN 40 – DN400) sizes,
- Bi-directional centric butterfly valve,
- EN ISO 1452, EN ISO 15493, DIN 2501, ISO 7005-1, EN 1092-1, ASTM B16.5 CL.150 flanging standards,
- EN ISO 16136, EN ISO 1452, EN ISO 15493 construction criteria,
- ISO 9393 test methods and requirements,
- ISO 5211 actuator couplings,
- PP-GR (Polypropylene-Glass Reinforced) body,
- PVC-U/PVC-C/PP-H/PVDF disk,
- Stainless Steel AISI 316 stem.
- Liner; EPDM, FPM. On request NBR seal material,
- Hand Lever Operated (DN 40 – DN200), Gearbox, Pneumatic Actuated, Electric Actuated Control Options,
- Developed for heavy industrial application special rigid design,



MATERIAL OPTIONS

U-PVC	MAXIMUM 55°C
C-PVC	MAXIMUM 95°C
PP-H	MAXIMUM 95°C
PVDF	MAXIMUM 140°C

CONNECTION TYPE

Wafer type butterfly valve
Wafer type butterfly valve with flanged set
Lug type butterfly valve
Lug type butterfly valve with flanged set

ACTUATOR FEATURES

- Aluminum extruded body,
- Double Acting or Single Acting (spring return) pneumatic actuator options
- Optionally On / Off switch box with mechanical or proximity limit
- Optional with NAMUR valve type air direction
- Proportional control with a choice of 4-20mA or 3-15psi.

FK SERIES

ELECTRICAL ACTUATED INDUSTRIAL TYPE BUTTERFLY VALVES

TECHNICAL ADVANTAGES

- 1½" ~ 16" (DN 40 ~ DN400) sizes,
- Bi-directional centric butterfly valve,
- EN ISO 1452, EN ISO 15493, DIN 2501, ISO 7005-1, EN 1092-1, ASTM B16.5 Cl.150 flanging standards,
 - EN ISO 16136, EN ISO 1452, EN ISO 15493 construction criteria,
 - ISO 9393 test methods and requirements,
 - ISO 5211 actuator couplings,
- PP-GR (Polypropylene - Glass Reinforced) body,
 - PVC-U/PVC-C/PP-H/PVDF disk,
 - Stainless Steel AISI 316 stem.
- Liner; EPDM, FPM. On request NBR seal material,
- Hand Lever Operated (DN40 ~ DN200); Gearbox, Pneumatic Actuated, Electric Actuated Control Options,



MATERIAL OPTIONS

U-PVC	MAXIMUM 55°C
C-PVC	MAXIMUM 95°C
PP-H	MAXIMUM 95°C
PVDF	MAXIMUM 140°C

CONNECTION TYPE

Wafer type butterfly valve
Wafer type butterfly valve with flanged set
Lug type butterfly valve
Lug type butterfly valve with flanged set

TECHNICAL DRAWING



DK SERIES

INDUSTRIAL TYPE DIAPHRAGM VALVES

TECHNICAL ADVANTAGES

- ½" ~ 2½" (DN15 ~ DN65) sizes,
- Diaphragm valve with maximized flow rate and DIALOCK® lockable handwheel,
- PN 10 (with water at 20°C) nominal pressure,
- U-PVC / C-PVC / PP-H / PVDF body,
- PP-GR bonnet and handwheel,
- PVC position indicator cap,
- EPDM, FPM, PTFE (on request NBR) diaphragm material,
- Manuel Control, Pneumatic Actuated Control Options,
- Optimised fluid dynamic design: maximum output flow rate thanks to the optimised efficiency of the fluid dynamics that characterise the new internal geometry of the body,
- Internal components in metal, totally isolated from the fluid and external environment.



MATERIAL OPTIONS

U-PVC	MAXIMUM 55°C
C-PVC	MAXIMUM 95°C
PP-H	MAXIMUM 95°C
PVDF	MAXIMUM 140°C

CONNECTION TYPE

Socket Solvent Cement (U-PVC, C-PVC)
 Threaded End (U-PVC, C-PVC, PP-H, PVDF)
 Socket Welded (PP-H and PVDF)
 Flanged (U-PVC, C-PVC, PP-H, PVDF)
 Butt Welded (PP-H and PVDF)

APPLICATION AREA

- Chemical and Petrochemical Industry,
- Water and Process Technologies,
- Shipbuilding and yacht industry,
- Electrolysis premises,
- Mining Industry,
- Food Industry
- Cooling systems
- Coating plant

TECHNICAL ADVANTAGES

- 3" ~ 4" (DN80 ~ DN100) sizes,
- Diaphragm valve with maximized flow rate and DIALOCK® lockable handwheel / Single wear diaphragm valve construction,
- PN10 with water at 20°C, PN6 with water at 20°C (PTFE Version) nominal pressure,
 - U-PVC / C-PVC / PP-H / PVDF body,
 - PP-GR bonnet and handwheel,
 - PA-GR position indicator cap,
- EPDM, FPM, PTFE (on request NBR) diaphragm material,
 - Manuel Control, Pneumatic Actuated Control Options,
- Optimised fluid dynamic design: maximum output flow rate thanks to the optimised efficiency of the fluid dynamics that characterise the new internal geometry of the body,
- Internal operating components in metal totally isolated from the conveyed fluid.

VM SERIES

INDUSTRIAL TYPE DIAPHRAGM VALVES



MATERIAL OPTIONS

U-PVC	MAXIMUM 55°C
C-PVC	MAXIMUM 95°C
PP-H	MAXIMUM 95°C
PVDF	MAXIMUM 140°C

CONNECTION TYPE

Flanged (U-PVC, C-PVC, PP-H, PVDF)
 Socket Solvent Cement (U-PVC, C-PVC)
 Socket Welded (PP-H and PVDF)

TECHNICAL DRAWING



DK SERIES

TECHNICAL ADVANTAGES

- ½" ~ 4" (DN15 ~ DN100) sizes,
 - Drinking water standards,
- EPDM or VITON seat options for fluid types,
- CaCO₃ calcite free 100% pure virgin material,
 - UV resistant powder added,
 - Specially rigid designed for heavy industrial applications,
- 100% tightness testing before shipment,
 - Working pressure Max: 10 Bar,
 - DIN, ANSI, JIS norms,

PNEUMATIC ACTUATED DIAPHRAGM VALVES



MATERIAL OPTIONS

U-PVC	MAXIMUM 55°C
C-PVC	MAXIMUM 95°C
PP-H	MAXIMUM 95°C
PVDF	MAXIMUM 140°C

CONNECTION TYPE

Socket Solvent Cement (U-PVC, C-PVC)
 Threaded End (U-PVC, C-PVC, PP-H, PVDF)
 Socket Welded (PP-H - PVDF)
 Flanged (U-PVC, C-PVC, PP-H, PVDF)
 Butt Welded (PP-H - PVDF)

ACTUATOR FEATURES

- Double acting or single acting (spring return) pneumatic actuator options,
- Optional on / off switch box with mechanical or proximity limit,
- Optional with NAMUR valve type air direction,
- 3-15ps or proportional control with a choice of 4-20 mA,

SV420 SERIES

PRESSURE CONTROL VALVES

TECHNICAL ADVANTAGES

- ½", ¾" ve 1" sizes,
- Diaphragm type pressure control valves,
- Both of Pressure loading valve and Pressure safety valve in dosing systems,
- PTFE diaphragm high corrosion resistance
- U-PVC, PP-H, PVDF ve AISI316L material options for all kinds of corrosive fluids,
- 1 – to 10 adjustable,
- High flow capacity and low pressure loss,



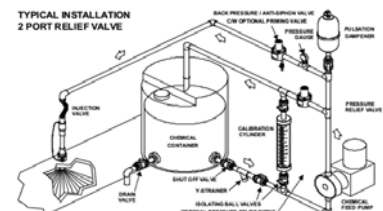
MATERIAL OPTIONS

U-PVC	MAXIMUM 55°C
PP-H	MAXIMUM 95°C
PP-PVDF	MAXIMUM 140°C
AISI316L	

CONNECTION TYPE

Socket Solvent Cement (U-PVC için)
 Threaded End (U-PVC, PP-H, PVDF, SS316L)
 Socket Welded (PP-H - PVDF)

TECHNICAL DRAWING



SV610 SERIES

TECHNICAL ADVANTAGES

- ½" - 2" sizes,
- Drinking water standards,
- CaCO₃ calcite free 100% pure virgin material,
- UV resistant powder added,
- Specially designed for heavy industrial applications,
 - Can be assembled vertically or horizontally,
- Water applications EPDM O-ring, Acidic applications VITON O-ring alternatives,
 - 100% tightness testing before shipment,
 - Working pressure Max: 10 Bar,
 - DIN, ANSI, JIS norms,

DOUBLE UNION, INDUSTRIAL TYPE BALL CHECK VALVES



MATERIAL OPTIONS

U-PVC	MAXIMUM 55°C
C-PVC	MAXIMUM 95°C
PP-H	MAXIMUM 95°C
TRANSPARENT-PVC	MAXIMUM 55°C

CONNECTION TYPE

- Socket Solvent Cement Bağlantı (U-PVC, C-PVC için)
- Threaded Connection (U-PVC, C-PVC)
- Socket Welded (PP-H)

TECHNICAL DRAWING



SV620 SERIES

INDUSTRIAL TYPE SWING CHECK VALVES

TECHNICAL ADVANTAGES

- 2½" ~ 8" (DN65 ~ DN200) Size Options,
- Drinking water standards,
- CaCO₃ calcite free 100% pure virgin material,
- UV resistant powder added,
- Specially designed for heavy industrial applications,
- Can be assembled vertically or horizontally,
- Water applications EPDM O-ring, Asidic applications VITON O-ring alternatives,
- 100% tightness testing before shipment,
- Working pressure Max: 10 Bar,
- DIN, ANSI, JIS norms,



MATERIAL OPTIONS

U-PVC	MAXIMUM 55°C
C-PVC	MAXIMUM 95°C

CONNECTION TYPE

- Socket Solvent Cement

TECHNICAL DRAWING



SV630 SERIES

TECHNICAL ADVANTAGES

- ½" - 8" (DN15 - DN200) Size Options,
 - Drinking water standards,
- CaCO₃ calcite free 100% pure virgin material,
 - UV resistant powder added,
- Specially designed for heavy industrial applications,
 - Can be assembled vertically or horizontally,
- Water applications EPDM O-ring, Acidic applications VITON O-ring alternatives,
 - 100% tightness testing before shipment,
 - Working pressure Max: 10 Bar,
 - DIN, ANSI, JIS norms,

SINGLE UNION INDUSTRIAL TYPE FOOT VALVES



MATERIAL OPTIONS

U-PVC	MAXIMUM 55°C
C-PVC	MAXIMUM 95°C

CONNECTION TYPE

- Socket Solvent Cement

TECHNICAL DRAWING



S22 SERIES

2/2 U-PVC SOLENOID VALVES

TECHNICAL ADVANTAGES

- S12 Serisi DN4, DN6, DN8 sizes,
- S22 Serisi DN8, DN10, DN15 sizes,
- 2/2 or 3/2 working alternative,
- Drinking water standarts,
- IP65 protection class,
- EPDM or VITON diaphragm options,
- Corrosion resistance materials



MATERIAL OPTIONS

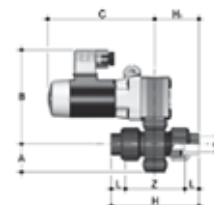
U-PVC

MAKSİMUM 50°C

CONNECTION TYPE

Socket Solvent Cement

TECHNICAL DRAWING



SV650 SERIES

WAFER TYPE SWING CHECK VALVES

TECHNICAL ADVANTAGES

- 1½" ~ 12" (DN40 ~ DN300) Size Options,
- Drinking water standards,
- CaCO₃ calcite free 100% pure virgin material,
- UV resistant powder added,
- Specially designed for heavy industrial applications,
- Can be assembled vertically or horizontally.
- 100% tightness testing before shipment,
- Working pressure Max: 10 Bar,



MATERIAL OPTIONS

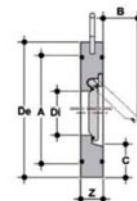
U-PVC

MAXIMUM 55°C

CONNECTION TYPE

- Wafer Type (Assembled between two flanged)

TECHNICAL DRAWING



RV SERIES

TECHNICAL ADVANTAGES

- 3/8" ~ 4" (DN10 ~ DN100) sizes,
 - Drinking water standards,
- CaCO₃ calcite free 100% pure virgin material,
 - UV resistant powder added,
- Specially designed for heavy industrial applications,
 - 100% tightness testing before shipment,
 - Working pressure Max: 10 Bar,
 - DIN, ANSI, JIS Norms,

DOUBLE UNION, Y-TYPE STRAINER



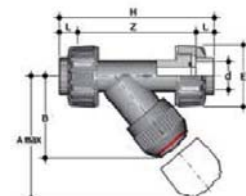
MATERIAL OPTIONS

U-PVC	MAXIMUM 55°C
C-PVC	MAXIMUM 95°C
PP-H	MAXIMUM 95°C

CONNECTION TYPE

Socket Solvent Cement (U-PVC, C-PVC)
 Threaded End (U-PVC, C-PVC, PP-H, PVDF)
 Socket Welded (PP-H - PVDF)
 Flanged (U-PVC, C-PVC, PP-H, PVDF)

TECHNICAL DRAWING





S22 SERIES

2/2 U-PVC SOLENOID VALVES

TECHNICAL ADVANTAGES

- S12 Serisi DN4, DN6, DN8 sizes,
- S22 Serisi DN8, DN10, DN15 sizes,
- 2/2 ve 3/2 working alternative,
- Drinking water standarts,
- IP65 protection class,
- EPDM or VITON diaphragm options,
- Corrosion resistance materials



MATERIAL OPTIONS

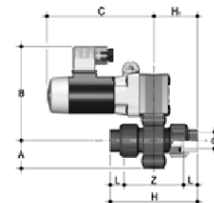
U-PVC

MAKSIMUM 50°C

CONNECTION TYPE

Socket Solvent Cement

TECHNICAL DRAWING



SV930 SERIES

TECHNICAL ADVANTAGES

- ½" ~ 12" size options,
- Heat and electrical insulation,
- Transporting/handling and mounting easily because of the lightness,
 - Low coefficient of friction,
- Acid and alkaline fluid resistant,
- 55°C max working temperature,
- 16 bar Max working pressure,
 - DIN, ANSI, JIS norms,

U-PVC PIPE AND FITTINGS



SV930 SERIES

PP-H PIPE AND FITTINGS

TECHNICAL ADVANTAGES

- ½" - 6" size options,
- Socket welded and butt welded options,
- Heat and electrical insulation,
- Transporting/handling and mounting easily because of the lightness,
- Low coefficient of friction,
- Acid and alkaline fluid resistant,
- 95°C max working temperature,
- 10/16 bar Max working pressure,
- DIN, ANSI, JIS norms,



SV930 SERIES

TECHNICAL ADVANTAGES

- ½" ~ 12" size options,
- Heat and electrical insulation,
- Transporting/handling and mounting easily because of the lightness,
 - Low coefficient of friction,
- Acid and alkaline fluid resistant,
- 140°C max working temperature,
- 10/16 bar Max working pressure,
 - DIN, ANSI, JIS norms,

PVDF PIPE AND FITTINGS



SV930 SERIES

C-PVC PIPE AND FITTINGS

TECHNICAL ADVANTAGES

- ½" ~ 12" size options,
- Heat and electrical insulation,
- Transporting/handling and mounting easily because of the lightness,
- Low coefficient of friction,
- Acid and alkaline fluid resistant,
- 95°C max working temperature,
- 16 bar Max working pressure,
- DIN, ANSI, JIS norms,



SV930 SERIES

TECHNICAL ADVANTAGES

- $\frac{1}{2}$ " ~ 8" size options,
- When you need to visually monitor whatever is passing through the piping systems,
 - Heat and electrical insulation,
- Transporting/handling and mounting easily because of the lightness,
 - Low coefficient of friction,
- Acid and alkaline fluid resistant,
- 55°C max working temperature,
- 10 ve 16 bar Max working pressure,
 - DIN, ANSI, JIS norms,

CLEAR PVC PIPE AND FITTINGS



GLOBAL CONNECT

Küre Endüstriyel Vana ve Plastik San. Tic. Ltd. Şti.

Bilmo Sanayi Sitesi No:8 Aydınlı Mh.
Tuzla / İstanbul - TURKEY

T: +90 216 593 20 33
F: +90 216 593 20 34

info@StarValve.com.tr
www.StarValve.com.tr





STARVALVE.COM.TR